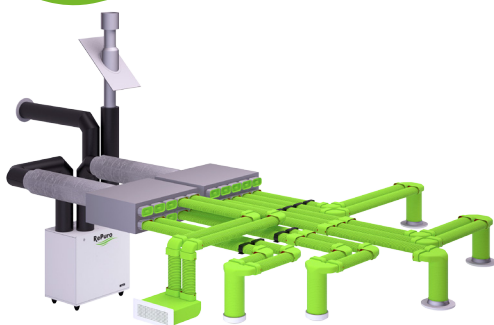


RePuro Heat recovery unit

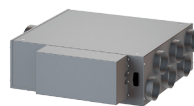


RePuroDistribution

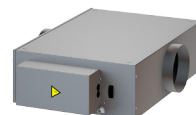


Aermec RePuroDistribution

This complete range of products for air distribution, which in association with the innovative series of units for heat and purification recovery RePuro, offers to designers, installators and end-users an efficient solution, easy in the installation and comfortable in all its cycle of life. Examples of plenums for air distribution, which could be equipped of: electric heater, germicidal lamp, water-exchanger.



PLS
with multi-way flange



PLS_M
with one-way flange

Characteristics

RePuro is an innovative counter-flow heat recovery system which ensures the correct renewal of air to indoor environments.

Through the use of up to 90% high efficiency heat exchangers **RePuro** allows the introduction of fresh air at a temperature close to that of the room concerned, reducing energy costs that would be incurred in exchanging the air in traditional ways or by mechanical ventilation alone. **PLASMACLUSTER** ionising filter. Plasmacluster is capable of reducing the level of pollutants, by decomposing the molecules that form them. The result is in the air: you can finally breathe clean, odour-free ionised air.

• Version

RePuro standard

RePuro_R with electric pre-heater for continuous operation in cold climates up to -15°C.

• Installation

Wall installation and ceiling: (100÷170)

upright (250÷650)

- Heat exchanger with hexagonal shape to increase the surface area.
- Heat exchanger easily removed from the front for cleaning or replacement.
- Casing in galvanised sheet steel with internal insulation.
- Standard filter on fresh air G4
- Standard filter on extract air G2.
- Filters can be removed for cleaning or replacement.
- All units are equipped with frost protection system for climates > -10°C.
- High efficiency of 90% and above (UNI EN 308).
- Free-cooling in mid-seasons through the automatic by-pass function (RePuro 250-350-450-550-650).
- **By-pass** no frost (RePuro 450-550-650)
- Ionizer filter **PLASMACLUSTER** as standard.
- Flow rate control 0-100% of nominal air flow rate.

- Direct drive centrifugal fans, with "Brushless" EC high efficiency variable speed electric motors (ERP2015).
- Microprocessor controller with interface capability to the VMF System.
- Monitoring of the units with remote wired control panel (supplied as standard). Innovative design, extremely slim, allows control of functions via a touch keypad with LCD display. The panel cable is 6 metres long supplied as standard. Activation of the electric heater in the RePuro_R version. Front in light grey colour PANTONE COOL GRAY 1C.
- Easy to wall mount with standard supplied mounting plate, or floor mount with anti-vibration mounts AVM accessory.
- Adaptable to existing systems.
- Compact size.
- Quiet operation.
- **The installation requires a condensate drain system.**

Accessories

- **AVM** : Anti-vibration mounts
- **SSR** : Bearing bracket (RePuro 250-350-450-550-650)
- **FF7** : Air filters for fresh air with F7 efficiency
- **KSAE** : External air temperature sensor
- **PLS** : Plenum with acoustic lining equipped with multi-way flange to ensure a uniform distribution in all treated areas.
The plenum is configured with:
 - **PLS_E** electric heater
 - **PLS_L** germicidal lamp
 - **PLS_W** water coil (requires accessory valve)
- **PLSM** : Plenum with acoustic lining equipped with one-way flange.
The plenum is configured with:
 - **PLSM_E** electric heater
 - **PLSM_L** germicidal lamp
 - **PLSM_W** Plenum with acoustic lining equipped with one-way flange)
- **VCH** : Kit consisting of powered 3-way valve, copper couplings and pipes. Combined with

- the accessory PLS/PLSM in the configuration with the water heat exchanger. In cooling recovery it requires an accessory tray BC.
- **VCHR** : such as VCH, but with isolation as.
 - **VCHD** : such as VCH, but with 2-way valve instead of 3-way one.
 - **BC** :Auxiliary condensate drip tray. BC10 for vertical installation. BC20 for horizontal installation.
 - **VMF-E5B** : White recessed panel, with backlit graphic LCD and touch keypad allowing the centralised command/control of a complete hydronic system consisting of:
 - Heat recovery units: up to 3 outputs for heat recovery units programmed according to time-clocks and/or by measuring the air quality obtained with the VMF-VOC accessory;
 - Fan coil units: up to 64 fan coil zones comprising 1 master + maximum 5 slaves;
 - Chiller/heat pump unit equipped with controls Modu_Control, GR3 and pCO² / pCO³ (required accessory RS 485 interface

- respectively MODU-485A, AER485, AER485P2 / AER485P1),
- Circulators: maximum of 12 configurable zone circulators;
 - Boiler: boiler enable for hot water production;
 - Domestic hot water module: complete management of the production of domestic hot water through the control of diverting valve/circulator, immersion heater, storage tank temperature sensor, anti-legionella cycle.
 - **VMF-E5N** : Variant of the **VMF-E5B** panel but with black coloured plastic.
 - **VMF-VOC** : Accessory for measuring air quality (see relevant point in the description of the VMF-E5B panel).
 - **VMF-CRP** : Accessory module for the control of the boilers, pumps and heat recovery units.

Mod. RePuro	Vers.	100	170	250	350	450	550	650
AVM	All	-	-	•	•	•	•	•
SSR	All	-	-	•	•	•	•	•
FF7	All	170	170	350	350	650	650	650
KSAE	All	•	•	•	•	•	•	•
Delivery plenum with multiway flange								
PLS350		•	•	•	•	-	-	-
PLS350W	(1)	•	•	•	•	-	-	-
PLS350E		•	•	•	•	-	-	-
PLS350L		•	•	•	•	-	-	-
PLS350WE	(1)	•	•	•	•	-	-	-
PLS350WL	(1)	•	•	•	•	-	-	-
PLS350WLE	(1)	•	•	•	•	-	-	-
PLS350LE		•	•	•	•	-	-	-
PLS650		-	-	-	-	•	•	•
PLS650W	(1)	-	-	-	-	•	•	•
PLS650E		-	-	-	-	•	•	•
PLS650L		-	-	-	-	•	•	•
PLS650WE	(1)	-	-	-	-	•	•	•
PLS650WL	(1)	-	-	-	-	•	•	•
PLS650WLE	(1)	-	-	-	-	•	•	•
PLS650LE		-	-	-	-	•	•	•
Delivery plenum with one-way flange								
PLSM350		•	•	•	•	-	-	-
PLSM350W	(1)(2)	•	•	•	•	-	-	-
PLSM350E		•	•	•	•	-	-	-
PLSM350L		•	•	•	•	-	-	-
PLSM350WE	(1)(2)	•	•	•	•	-	-	-
PLSM350WL	(1)(2)	•	•	•	•	-	-	-
PLSM350WLE	(1)(2)	•	•	•	•	-	-	-
PLSM350LE		•	•	•	•	-	-	-
PLSM650		-	-	-	-	•	•	•
PLSM650W	(1)(2)	-	-	-	-	•	•	•
PLSM650E		-	-	-	-	•	•	•
PLSM650L		-	-	-	-	•	•	•
PLSM650WE	(1)(2)	-	-	-	-	•	•	•
PLSM650WL	(1)(2)	-	-	-	-	•	•	•
PLSM650WLE	(1)(2)	-	-	-	-	•	•	•
PLSM650LE		-	-	-	-	•	•	•
Kit for plenum								
VCH	(3)	•	•	•	•	•	•	•
VCHR	(3)	•	•	•	•	•	•	•
VCHD	(3)	•	•	•	•	•	•	•
BC10		•	•	•	•	•	•	•
BC20		•	•	•	•	•	•	•
VMF-system								
VMF-CRP		•	•	•	•	•	•	•
VMF-VOC		•	•	•	•	•	•	•
VMF-E5N		•	•	•	•	•	•	•
VMF-E5B		•	•	•	•	•	•	•

(1) Combination with three-way valve kit required.

(2) If you intend to use all the after-heating coil system, or in all the situations in which the air temperature inside the pipe could provoke condensation on external surfaces of pipe, it is mandatory to isolate adequately the installation components.

(3) in the cold-functioning they require the accessory BC10 o 20

Technical data

Mod.	RePuro	100	170	250	350	450	550	650
Nominal air flow rate	m ³ /h	100	170	250	350	450	550	650
Available static pressure	Pa	85	20	195	133	100	120	70
Winter recovery efficiency	%	94,4	91,2	91,9	89,4	90,3	88,6	87
Recovered heating capacity	W	957	1573	2329	3171	4118	4940	5734
Winter recovery efficiency (1)	%	90,6	85,3	86,3	82,2	83,7	81	78,4
Recovered heating capacity (1)	W	601	963	1433	1910	2500	2957	3386
Summer recovery efficiency	%	90,6	85,3	86,4	82,2	83,7	81	78,5
Recovered cooling capacity	W	180	289	430	573	750	887	1015
<hr/>								
Nominal air flow rate	(2) m ³ /h	75	125	150	200	300	350	450
Available static pressure	Pa	135	110	331	376	210	300	270
Winter recovery efficiency	%	95,7	93,2	94,8	93,3	93	92,1	90,3
Recovered heating capacity	W	728	1181	1441	1891	2830	3267	4118
Winter recovery efficiency	%	92,7	88,6	91,1	88,6	88,2	86,6	83,7
Recovered heating capacity	W	462	735	908	1177	1758	2014	2500
Summer recovery efficiency	%	92,7	88,6	91,2	88,7	88,3	86,7	83,7
Recovered cooling capacity	W	138	220	272	353	527	604	750
<hr/>								
Nominal air flow rate	(2) m ³ /h	50	75	75	100	150	175	200
Available static pressure	Pa	185	210	426	526	310	430	485
Winter recovery efficiency	%	97	95,7	97,2	96,4	96,2	95,7	95,1
Recovered heating capacity	W	492	728	739	977	1463	1697	1928
Winter recovery efficiency (1)	%	95	92,7	95,3	93,9	93,6	92,7	91,7
Recovered heating capacity (1)	W	315	462	475	623	932	1077	1218
Summer recovery efficiency	%	95	92,7	95,3	93,9	93,6	92,7	91,7
Recovered cooling capacity	W	95	138	142	187	280	323	365

GENERAL DATA

Maximum power input	W	45	65	160	180	220	280	360
Power supply	V/ph/Hz	230V/1/50Hz	230V/1/50Hz	230V/1/50Hz	230V/1/50Hz	230V/1/50Hz	230V/1/50Hz	230V/1/50Hz

Winter recovery

Exhaust air temperature 20°C b.s. 50% u.r.; Fresh air temperature -10°C b.s. 80% u.r.

(1) Exhaust air temperature 25°C b.s. 27% u.r.; Fresh air temperature 5°C b.s. 50% u.r. (UNI EN308)

Summer recovery

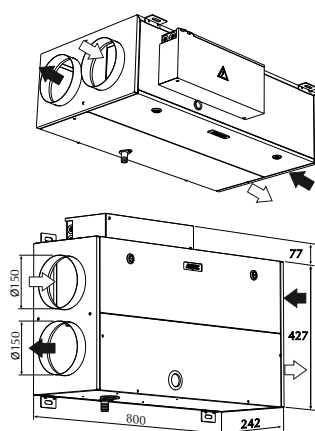
Exhaust air temperature 26°C b.s. 50% u.r.; Fresh air temperature 32°C b.s. 50% u.r.

(2) capacities obtained with air flows different from nominal ones.

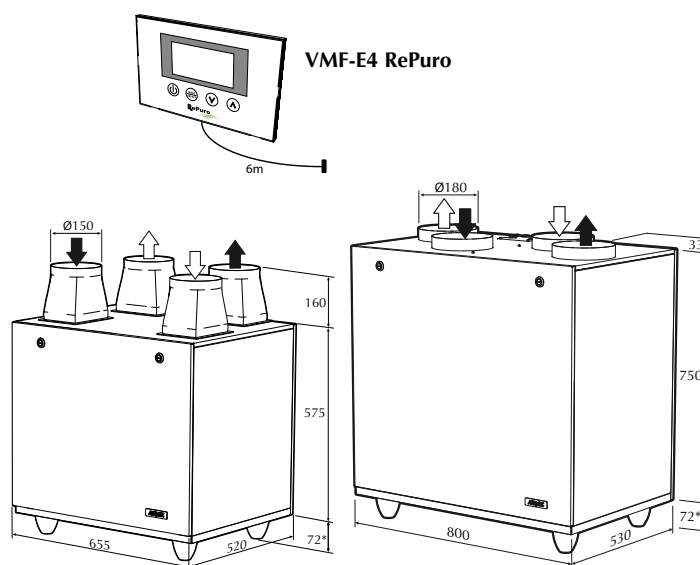
Dimensions (mm)

➔ Extract air

➞ Fresh air



RePuro 100 - RePuro 170



RePuro 250 - RePuro 350

RePuro 450 - RePuro 550 - RePuro 650

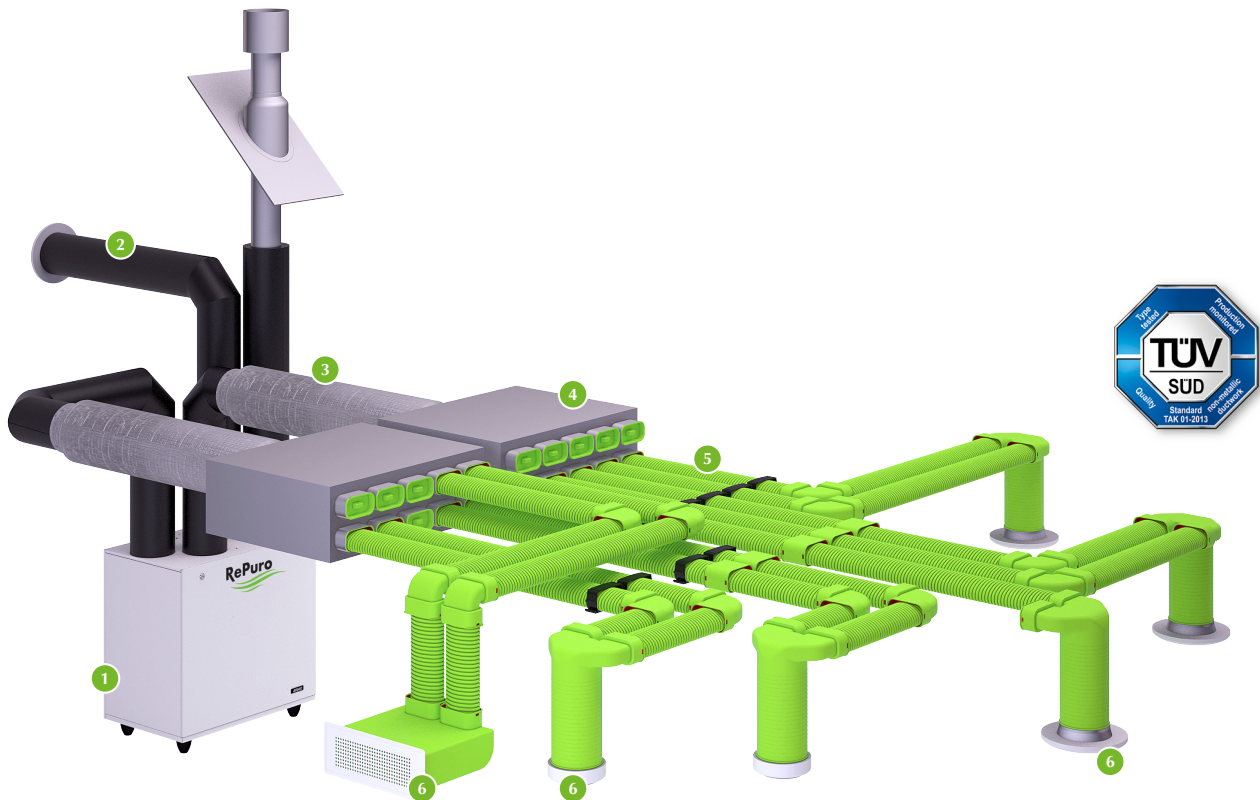
* = with AVM accessory

Mod. RePuro	Vers.	100	170	250	350	450	550	650
Weight (kg)	tutte	25	25	48	48	55	55	55

RePuroDistribution

Aermec RePuroDistribution

This complete range of products for air distribution, which in association with the innovative series of units for heat and purification recovery RePuro, offers to designers, installators and end-users an efficient solution, easy in the installation and comfortable in all its cycle of life.



- **EASY "PLUG & PLAY" INSTALLATION**
- **LOW DUCT HEIGHT FOR IN-WALL AND SCREED-FLOOR APPLICATION**
- **ANTI-STATIC AND ANTI-BACTERIAL PROPERTIES**
- **LONG-TERM ENERGY EFFICIENT BY MECHANICAL CONNECTIONS**
- **THE DUCT SEMI-OVAL IS CERTIFIED TÜV**

Please note:

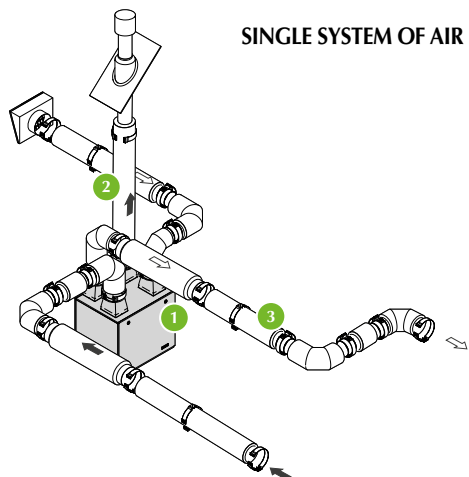
The picture shows as an indication only an example of an installation with semi-oval, semi-rigid antibacteric ducts, composed by:

- 1 heat recovery unit RePuro
- 2 Duct with external air intake/expulsion
- 3 Interconnection between RePuro and distribution box
- 4 Distribution box
- 5 Air distribution with semi-oval semi-rigid antibacteric ducts.
- 6 Terminals with nozzles and design grilles

The Aermec range in addition to point n. 5 ⁵, provides two other air distribution system:

- air distribution with round semi-rigid ducts;
- air distribution with rigid rectangular ducts.

SINGLE SYSTEM OF AIR INLET AND EXHAUST CONNECTED TO REPURO



- 1 Heat recovery unit RePuro
- 2 Ducts with external air intake/expulsion
- 3 Interconnection between RePuro and distribution plenum

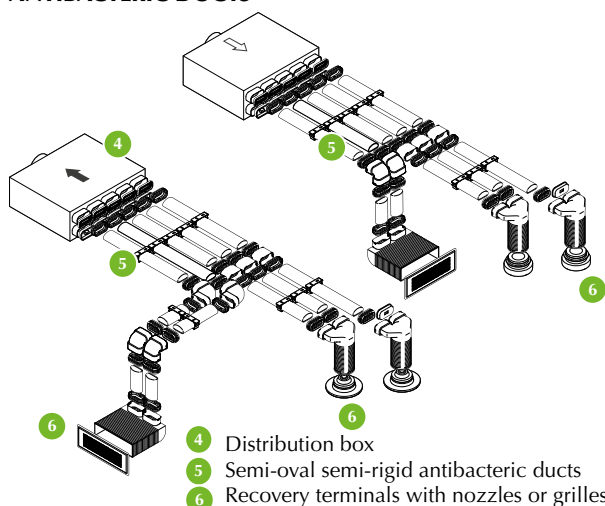
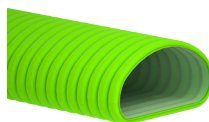


Some examples of the components

		n° in to package	RePuro						
			100	170	250 250R	350 350R	450 450R	550 550R	650 650R
COMPONENTS FOR EXTERNAL AIR INTAKE/EXPULSION SYSTEM									
TV-150	vertical black roof terminal DN150	1	•	•	•	•	-	-	-
T25-150	Underlay for pitched roofs 5-25° DN150	1	•	•	•	•	-	-	-
T45-150	Underlay for pitched roofs 25-45° DN150	1	•	•	•	•	-	-	-
T55-150	Underlay for pitched roofs 35-55° DN150	1	•	•	•	•	-	-	-
TP-150	Rose window deal for flat roofs DN150	1	•	•	•	•	-	-	-
TAP-150B	Suction wall terminal white DN150	1	•	•	•	•	-	-	-
TAP-150N	Suction wall terminal black DN150	1	•	•	•	•	-	-	-
CCI-150	Insulated duct L=2000mm - DN150	1	•	•	•	•	-	-	-
C90-150	90° insulated curve DN150	4	•	•	•	•	-	-	-
C45-150	45° insulated curve DN150	4	•	•	•	•	-	-	-
C30-150	30° insulated curve DN150	4	•	•	•	•	-	-	-
C15-150	15° insulated curve DN150	4	•	•	•	•	-	-	-
GC-150	Clip locking collar for ducts DN150	16	•	•	•	•	-	-	-
CLF-150	Locking collar joint - duct DN150	16	•	•	•	•	-	-	-
SC-150	Silencer L=1000mm - DN150	1	•	•	•	•	-	-	-
TV-180	Terminal with vertical black roof DN180	1	-	-	-	-	•	•	•
T45-180	Underlay for pitched roofs 25-45° DN180	1	-	-	-	-	•	•	•
TP-180	Rose window deal for flat roofs DN180	1	-	-	-	-	•	•	•
TAP-180B	Suction wall terminal white DN180	1	-	-	-	-	•	•	•
TAP-180N	Suction wall terminal black DN180	1	-	-	-	-	•	•	•
CCI-180	insulated duct L=2000mm DN180	1	-	-	-	-	•	•	•
C90-180	90° insulated curve DN180	4	-	-	-	-	•	•	•
C45-180	45° insulated curve DN180	4	-	-	-	-	•	•	•
C30-180	30° insulated curve DN180	4	-	-	-	-	•	•	•
C15-180	15° insulated curve DN180	4	-	-	-	-	•	•	•
GC-180	Locking collar joint DN180	16	-	-	-	-	•	•	•
CLF-180	Collare di fissaggio giunto - canale DN180	16	-	-	-	-	•	•	•
SC-180	Silencer L=1500mm - DN180	1	-	-	-	-	•	•	•
COMPONENTS OF INTERCONNECTIONS BETWEEN RePuro UNITS, PLENUM AND SILENCERS									
CCI-150	Insulated duct L=2250mm DN150	1	•	•	•	•	-	-	-
C90-150	90° insulated curve DN150	4	•	•	•	•	-	-	-
C45-150	45° insulated curve DN150	4	•	•	•	•	-	-	-
C30-150	30° insulated curve DN150	4	•	•	•	•	-	-	-
C15-150	15° insulated curve DN150	4	•	•	•	•	-	-	-
GC-150	Duct clip joints DN150	16	•	•	•	•	-	-	-
CLF-150	Locking collar joint - duct DN150	16	•	•	•	•	-	-	-
SC-150	Silencer L=1000mm - DN150	1	•	•	•	•	-	-	-
CCI-180	Insulated duct L=2250mm DN180	1	-	-	-	-	•	•	•
C90-180	90° insulated curve DN180	4	-	-	-	-	•	•	•
C45-180	45° insulated curve DN180	4	-	-	-	-	•	•	•
C30-180	30° insulated curve DN180	4	-	-	-	-	•	•	•
C15-180	15° insulated curve DN180	4	-	-	-	-	•	•	•
GC-180	Duct clip joint DN180	16	-	-	-	-	•	•	•
CLF-180	Locking collar joint - duct DN180	16	-	-	-	-	•	•	•
SC-180	Silenziatore L=1500mm - DN180	1	-	-	-	-	•	•	•

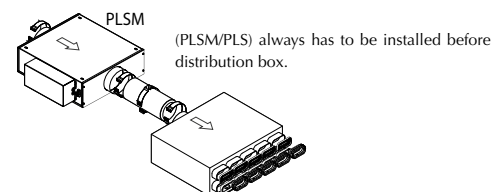
Please note: For further informations on the typologies of installations and of accessories, please refer to the dedicated documentation available on Aermec website www.aermec.com.

DISTRIBUTION SYSTEM WITH SEMI-OVAL SEMI-RIGID ANTIBACTERIC DUCTS



Aermec, offers the possibility of any post-treatment, of mono-multi flange delivery plenum (PLSM/PLS) with different combinable accessories :

- Electric heater
- Germicidal lamp
- Water exchanger



n° in to package	RePuro						
	100	170	250 250R	350 350R	450 450R	550 550R	650 650R

COMPONENTS OF DISTRIBUTION SEMI-OVAL SEMI-RIGID BETWEEN PLENUM AND ELEMENTS FOR AIR DIFFUSION AND RECOVERY .

BDX6-150	Distribution box 6 nozzles with deadening DN150	1	•	•	•	•	•	•	•
BDSX10-150	Distribution box 10 nozzles with deadening and silencer bafflers DN150	1	•	•	•	•	•	•	•
BDX12-150	Distribution box 12 nozzles with deadening DN150	1	•	•	•	•	•	•	•
BDSX15-180	Distribution box 15 nozzles with deadening and silencer bafflers DN180	1	-	-	-	-	•	•	•
CO30	Semi-oval semi-rigid antibacteric duct L=30	1	•	•	•	•	•	•	•
CO50	Semi-oval semi-rigid antibacteric duct L=50m	1	•	•	•	•	•	•	•
RDP	Flow regulator for semi-oval semi-rigid antibacteric ducts	10	•	•	•	•	•	•	•
SMC	Mounting bracket for semi-oval semi-rigid antibacteric ducts	10	•	•	•	•	•	•	•
ADT	Sealing ring for semi-oval semi-rigid antibacteric ducts	8	•	•	•	•	•	•	•
CVO	Vertical curve for semi-oval duct	3	•	•	•	•	•	•	•
COO	Horizontal curve for semi-oval semi-rigid antibacteric ducts	2	•	•	•	•	•	•	•
TO	Cap for semi-oval semi-rigid antibacteric ducts	5	•	•	•	•	•	•	•
GCO	Joint for semi-oval semi-rigid antibacteric ducts	4	•	•	•	•	•	•	•
G0090	90° curve to attach semi-oval semi-rigid antibacteric ducts with round semi-rigid ducts.	1	•	•	•	•	•	•	•
AD125X2	Adaptor for nozzle(x 2) - DN125	1	•	•	•	•	•	•	•
CGP	Collector for flat grille (x 2) - (309x86)	1	•	•	•	•	•	•	•
ADG	Adaptor for grille (140x140)	1	•	•	•	•	•	•	•

TERMINALS FOR AIR INTAKE AND INPUT FROM ROOMS SUGGESTED FOR RESIDENTIAL USE

Some examples



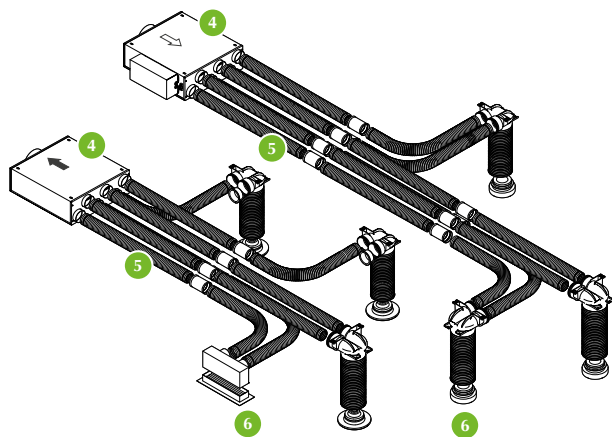
Please note: For further informations on the typologies of installations and of accessories, please refer to the dedicated documentation available on Aermec website www.aermec.com

GRM	Painted steel grille RAL9010	1	•	•	•	•	•	•	•
GRAI	Stainless steel grille	1	•	•	•	•	•	•	•
BES-125	Extraction nozzle DN 125	6	•	•	•	•	•	•	•
BIM-125	Input nozzle DN125	3	•	•	•	•	•	•	•

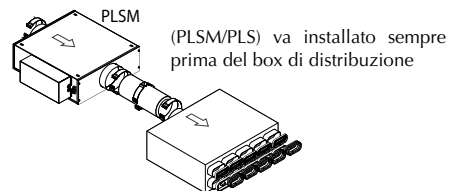
TERMINALS FOR AIR INTAKE AND INPUT FROM ROOMS SUGGESTED FOR COMMERCIAL USE

GRQM	Square grille with fixed aluminium fins	1	•	•	•	•	•	•	•
GRRM	Rectangular grille with fixed aluminium fins	1	•	•	•	•	•	•	•
GRQB	Square grille with horizontal and vertical swinging aluminium fins	1	•	•	•	•	•	•	•
GRRB	Rectangular grille with horizontal and vertical swinging aluminium fins	1	•	•	•	•	•	•	•
GRQL	Square grille with vertical swinging aluminium fins	1	•	•	•	•	•	•	•
GRRL	Griglia rettangolare con alette verticali orientabili alluminio	1	•	•	•	•	•	•	•

DISTRIBUTION SYSTEM WITH ROUND SEMI-RIGID DUCTS



Aermec offers the opportunity for an eventual after-treatment of intake plenum mono-multi flange (PLSM/PLS) with different combinable accessories:
 - Electric heater
 - Germicidal lamp
 - Water exchanger



- 4 Distribution box
- 5 Semi-rigid round ducts
- 6 Recovery terminals with nozzles and design grilles

n° in to package	packa-ge	RePuro					
		170	250 250R	350 350R	450 450R	550 550R	650 650R

COMPONENTS FOR DISTRIBUTION ROUND SEMI-RIGID BETWEEN PLENUM AND ELEMENTS FOR AIR DIFFUSION AND RECOVERY

Component	Description	n°	170	250 250R	350 350R	450 450R	550 550R	650 650R
BDX6T-150	Deadening Distribution box with 6 nozzles Ø75 (internal) - DN150	1	•	•	•	•	-	-
BDX10T-150	Distribution box 10 nozzles with deadening and silenced septa Ø75 (internal) - DN150	1	•	•	•	•	-	-
BDSX10T-150	Distribution box 10 nozzles with deadening and silenced septa Ø75 (internal) - DN150	1	•	•	•	•	-	-
BDSX15T-180	Distribution box 15 nozzles with deadening and silenced septa Ø75 (internal) - DN180	1	-	-	-	•	•	•
CT50	Round duct Ø63mm (internal) / Ø75 mm (external) L=50m	1	•	•	•	•	•	•
CT50AB	Round duct Ø63mm (internal) / Ø75 mm (external) L=50m Antistatic and antibacteric	1	•	•	•	•	•	•
RDPT	Flow regulator for round ducts	10	•	•	•	•	•	•
AD125X2T	Adaptor for nozzles 2xØ75mm - DN125	1	•	•	•	•	•	•
ADTT	Sealing ring for round ducts Ø75mm	10	•	•	•	•	•	•
TCT	Cap for round ducts Ø75mm	5	•	•	•	•	•	•
GCT	Joint for round ducts Ø75mm	4	•	•	•	•	•	•
ADGR2T	Adaptor for rectangular grille 2xØ75mm (external)	1	•	•	•	•	•	•
ADGQ1T	Adaptor for rectangular grille 1xØ75mm (external)	1	•	•	•	•	•	•

TERMINAL FOR AIR INTAKE AND INPUT FROM ROOMS SUGGESTED FOR RESIDENTIAL USE

Some examples



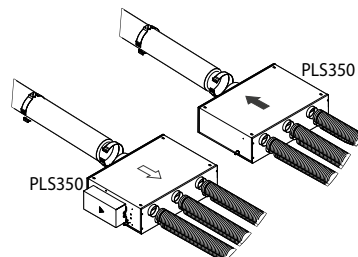
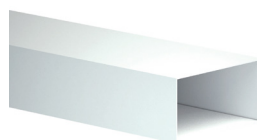
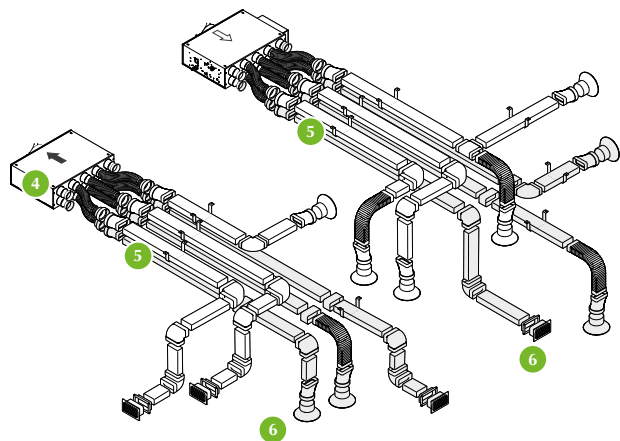
Please note: For further informations on the typologies of installations and of accessories, please refer to the dedicated documentation available on Aermec website www.aermec.com

Component	Description	n°	170	250 250R	350 350R	450 450R	550 550R	650 650R
GRM	Metal grille RAL9010	1	•	•	•	•	•	•
GRAI	Stainless steel grille	1	•	•	•	•	•	•
BES-125	Extraction nozzle DN 125	6	•	•	•	•	•	•
BIM-125	Input nozzle DN125	3	•	•	•	•	•	•

TERMINAL FOR AIR INTAKE AND INPUT FROM ROOMS SUGGESTED FOR COMMERCIAL USE

Component	Description	n°	170	250 250R	350 350R	450 450R	550 550R	650 650R
GRQM	Square grille with fixed aluminium fins	1	•	•	•	•	•	•
GRRM	Rectangular grille with fixed aluminium fins	1	•	•	•	•	•	•
GRQB	Square grille with horizontal and vertical swinging aluminium fins	1	•	•	•	•	•	•
GRRB	Rectangular grille with horizontal and vertical swinging aluminium fins	1	•	•	•	•	•	•
GRQL	Square grille with vertical swinging aluminium fins	1	•	•	•	•	•	•
GRRL	Rectangular grille with vertical swinging aluminium fins	1	•	•	•	•	•	•

DISTRIBUTION SYSTEM WITH RECTANGULAR RIGID DUCTS



In this system Plenum PLS can be used also as a simple distribution box without any accessory for post-treatment.

- 4 distribution Plenum PLS
- 5 Rectangular rigid ducts
- 6 Recovery terminals with nozzles and design grilles

n° in to package	RePuro						
	100	170	250 250R	350 350R	450 450R	550 550R	650 650R

COMPONENTS FOR RECTANGULAR RIGID DISTRIBUTION WITHIN PLENUM AND ELEMENTS FOR AIR DIFFUSION AND INTAKE

Code	Description	n° in to package	100	170	250 250R	350 350R	450 450R	550 550R	650 650R
CPR	Rectangular flat duct 55x110x2000mm	6	•	•	•	•	•	•	•
GRT	Rectangular joint 55x110mm	5	•	•	•	•	•	•	•
CRT	Rectangular terminal frame 55x110mm	4	•	•	•	•	•	•	•
ARC	Rectangular/Circular adaptor 55x110mm/ Ø100	6	•	•	•	•	•	•	•
GRCV90	Vertical crank 90° Rectangular Circular Adaptor55x110mm	4	•	•	•	•	•	•	•
GRO45	Crank 45° Rectangular Horizontal 55x110mm	8	•	•	•	•	•	•	•
GRO90	Crank 90° Rectangular Horizontal 55x110mm	8	•	•	•	•	•	•	•
GRV90	Crank 90° rectangular vertical 55x110mm	6	•	•	•	•	•	•	•
TR	Rectangular terminal cap	4	•	•	•	•	•	•	•
RMC100	Multi-cone reducer Ø100 - Ø80	4	•	•	•	•	•	•	•
RMC125	Multi-cone reducer Ø125 - Ø100	4	•	•	•	•	•	•	•
RTR	Rectangular T joint 55x110mm	3	•	•	•	•	•	•	•
CR	Rectangular collar 55x110mm	10	•	•	•	•	•	•	•
MFR	Rectangular flexible sleeve 55x110x500mm	1	•	•	•	•	•	•	•
CT50	Round duct Ø63mm (internal) / Ø75 mm (external) L=50m	1	•	•	•	•	•	•	•
CT50AB	Round duct Ø63mm (internal) / Ø75 mm (external) L=50m Antistatic and antibacteric	1	•	•	•	•	•	•	•
RDPT	Flow regulator for round ducts	10	•	•	•	•	•	•	•
ADTT	Sealing ring for round ducts Ø75mm	10	•	•	•	•	•	•	•
CPVC	Glue for PVC	2	•	•	•	•	•	•	•
NAL	Aluminium tape 50x0,3mm Lenght= 50m	5	•	•	•	•	•	•	•

ACCESSORIES FOR AIR DIFFUSION AND RECOVERY

Some examples



Please note: For further informations on the typologies of installations and of accessories, please refer to the dedicated documentation available on Aermec website www.aermec.com

Code	Description	n° in to package	100	170	250 250R	350 350R	450 450R	550 550R	650 650R
GRIR	Rectangular template grille 55x110mm	6	•	•	•	•	•	•	•
GRIC	Circular template grille Ø100mm	10	•	•	•	•	•	•	•
BCI	Circular template nozzle with net Ø100mm	10	•	•	•	•	•	•	•
BFR	Self-adjusting template nozzle Ø100mm	6	•	•	•	•	•	•	•
BA30	Self-adjusting nozzle 30m³/h Ø125mm	5	•	•	•	•	•	•	•
BA60	Self-adjusting nozzle 60m³/h Ø125mm	5	•	•	•	•	•	•	•

Please note: For further informations on the typologies of installations and of accessories, please refer to the dedicated documentation available on Aermec website www.aermec.com.